



**FOX RIDGE**  
HOMES

A QUALICO® Company

[foxridgehomeswpg.com](http://foxridgehomeswpg.com)

204.224.6175



ELEVATION A

## Concept 2108 - The Burke

**Two Storey, 2,720 sq. ft.**

**3 bedrooms, 2.5 bathrooms**

**23' x 22' attached garage**

If you don't already have the ideal piece of land, as a chosen and reputable custom builder, Foxridge Homes has access to a carefully-curated, exclusive selection of lots in Winnipeg's (and the surrounding areas') most appealing new neighbourhoods.

Learn more at [foxridgehomeswpg.com](http://foxridgehomeswpg.com)

### FEATURES:

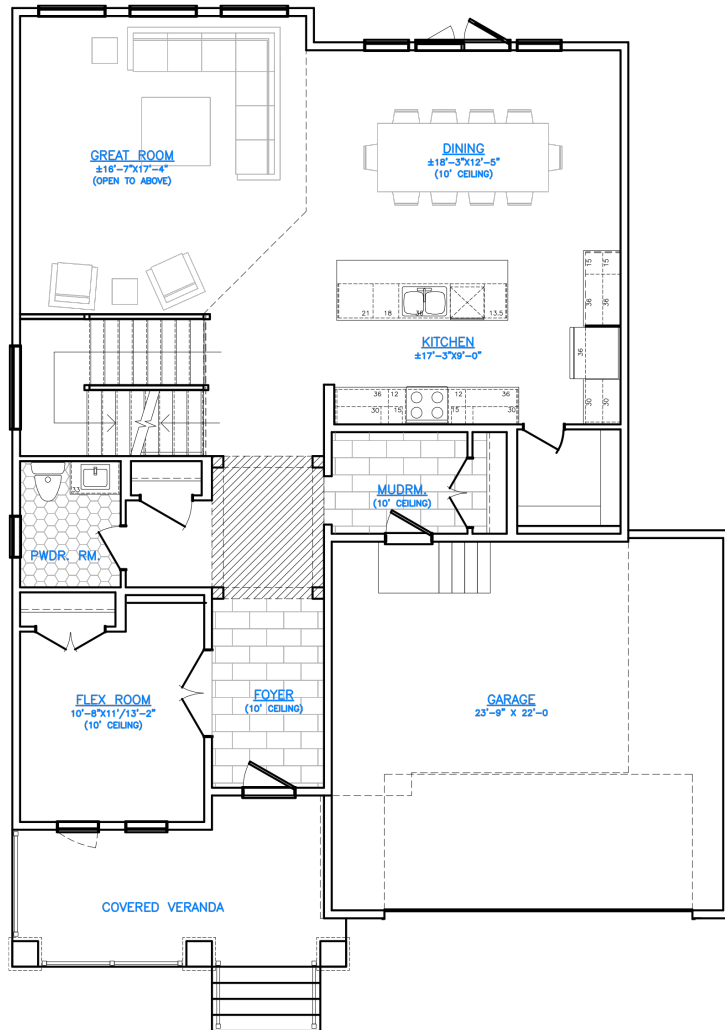
- Covered veranda
- Caesarstone quartz countertops in kitchen, powder room, and ensuite
- Laminate flooring to main floor living areas
- Electric fireplace with media rough-in, per plan
- 10' ceilings in dining room, foyer, mud room, and flex room
- Primary bedroom includes walk-in closet and ensuite with double vanity and free standing tub
- 60 gallon hot water tank
- 1-2-5-10 National Home Warranty

# Concept 2108

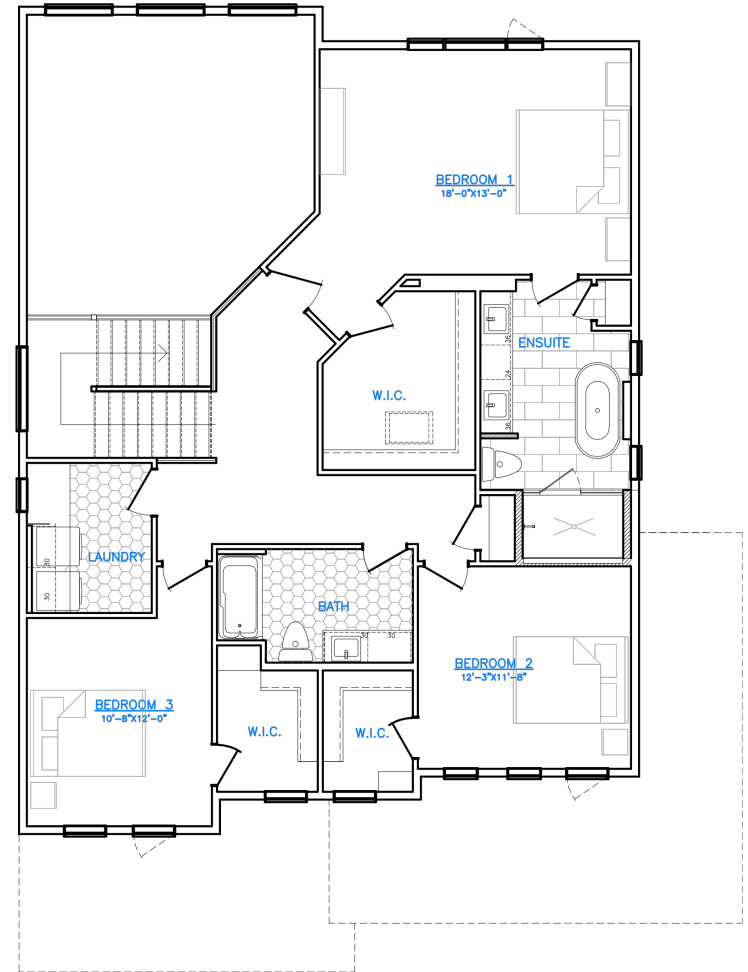
## FLOOR PLAN

MAIN FLOOR: 1,385 SQ. FT.  
SECOND FLOOR: 1,335 SQ. FT.

### MAIN FLOOR



### SECOND FLOOR



A QUALICO Company

ONE DR. DAVID FRIESEN DRIVE  
WINNIPEG, MANITOBA | R3X 0G8  
PHONE: 204.224.6175

[foxridgehomeswpg.com](http://foxridgehomeswpg.com)

All illustrations are artist's conception and may vary. Room dimensions are approximate. Windows and room sizes may vary with elevations. Mechanical equipment location and placement subject to change as required by building code and at discretion of builder. Furniture outlines for purpose of visualizing room layout only, furniture not included. Foxridge Homes reserves the right to change material or specifications without notice.

Plan Rev - 3/16/2023